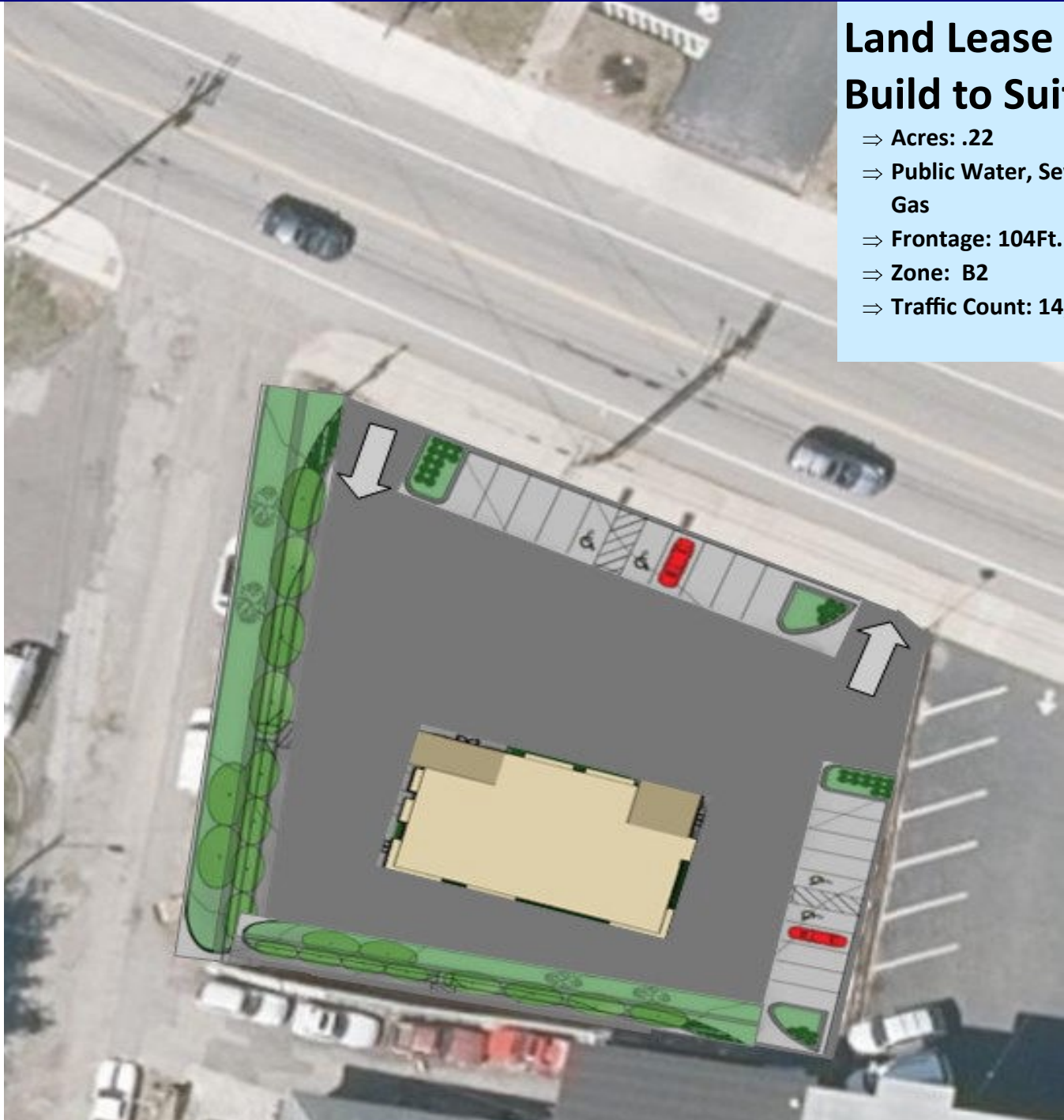


# 1248 Main St, Willimantic

## .22 Acre Parcel in commercial Retail Corridor

### Land Lease or Build to Suit

- ⇒ Acres: .22
- ⇒ Public Water, Sewer, Gas
- ⇒ Frontage: 104Ft.
- ⇒ Zone: B2
- ⇒ Traffic Count: 14,300



# LYMAN

**REAL ESTATE BROKERAGE & DEVELOPMENT**

[www.LymanRE.com](http://www.LymanRE.com)

**RON LYMAN**

Main Office:  
1160 Boston Post Rd.  
Westbrook, CT 06498  
Mailing Address:  
73 Second Ave.  
Westbrook, CT 06498  
860-887-5000 x1 Office  
860-884-4666 Cell





Demographics	1 MILE	3 MILES	5 MILES	10MILES
Total Population	10,073	26,629	36,874	94,487
Average Household Income	\$49,365	\$65,874	\$81,077	\$100,343

All information stated is from sources deemed reliable and is submitted subject to errors, omissions, changes of other terms and conditions, prior sales, financing or withdrawal without notice. Buyer/Tenant agents will be eligible for a portion of commission only if they have an existing signed representation.